

Talk to The Animals Sherlock, or, Animaltary, My Dear Watson

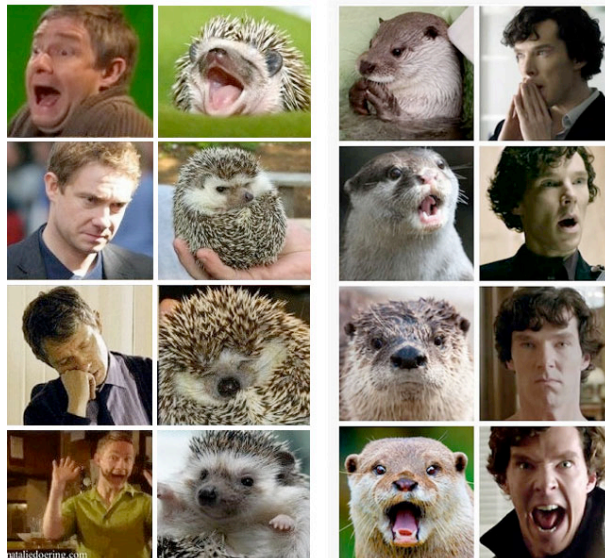
by

Howard Ostrom

Part I

Do you feel a creeping, shrinking sensation, Watson, when you stand before the serpents in the Zoo, and see the slithery, gliding, venomous creatures, with their deadly eyes and wicked, flattened faces? CHAS

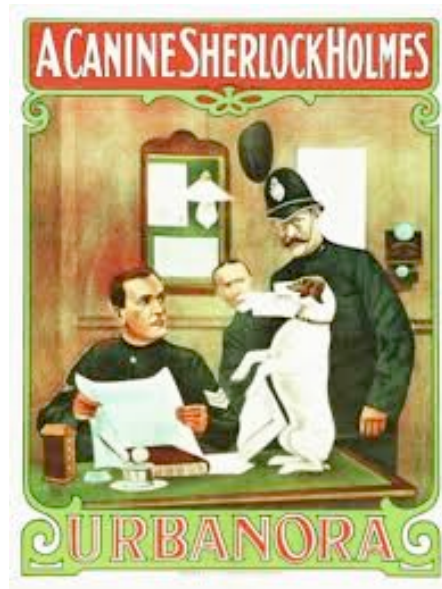
Sherlotter, the comparison of Benedict Cumberbatch to an otter, and Johnhog, the comparison of Martin Freeman to a hedgehog, was the hilarious product of the BBC “Sherlock” internet fandom. It inspired this essay on animals who have actually portrayed Sherlock Holmes and Dr. Watson..



Johnhog and Sherlotter

Let us begin by looking at Film and TV animals who have portrayed Sherlock Holmes. The earliest films that come to mind are from the silent film era, and feature Spot the Dog, and Felix the Cat, foiling the villains a la Sherlock Holmes.

1912 - Spot - "A Canine Sherlock Holmes" - Starring Spot, a dog who leads a detective to a robber's hideout and fetches the police. Urban Trading Co. (U.K.).



Spot

1914 - Sherlock Bug, the great detective, was not only an animal Holmes, he was the first animated Sherlock Holmes ever made. In Lubin Film Company's "Another Tale", "Sam Bug & Raskus Bug are suitors for Mandy Bug. Her intentions are strong for Sam, so she gives Raskus the 'cold shoulder'. Raskus Bug's blood is aroused and he loses no time in telling his troubles to his gang, the leader being no other than "Gyp the Bug." They cook up a scheme whereby they kill a silkworm which is very much against the law in Bugland. They put the silkworm in the rain barrel near Sam Bug's sweetheart's home, then they get a Bug cop and Sam Bug is arrested. Mandy knows it is the work of the gang and gets Sherlock Bug, the great detective, who gets on the trail, traps the gang by blowing up the gang's den, puts them all in jail and Sam Bug is released."¹

1928 - Felix the Cat - "The Oily Bird" - Felix the Cat cartoon. Educational. "The Oily Bird" - "Felix the Cat is accused by the lady of the house of stealing her jewels. He sets out to find the real criminal, who proves to be a wise old hen. Felix the Cat does a regular Sherlock Holmes, and at last tracks down the guilty one."²

¹ "The Moving Picture World" magazine Vol. 20 Apr. - Jun. 1914 pg. 568/570

² "The Film Daily" (Volume 43--46) Jan - Dec 1928 Page 13 - March 4, 1928



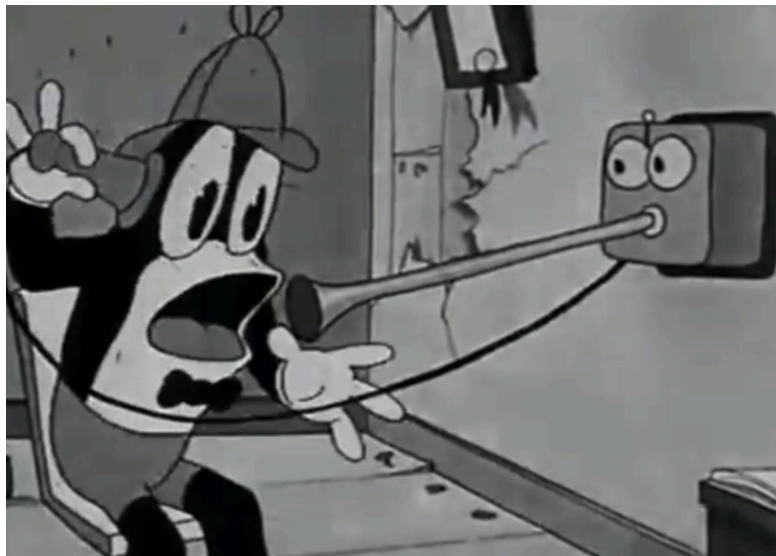
Felix the Cat

1928 - "Sure-Locked Homes"- Felix the Cat cartoon. Educational.

"Sure-Locked Homes" - "Felix starts out to do a real Sherlock Holmes and the atmosphere is worked up in the real detective thriller fashion with clever cartoon work. There is the Bat and the Spider, and the latter is made a partner by Felix to help the cat sleuth capture the criminals. So he has the spider spin a web to capture the villains."³

See Felix the Cat in "Sure-Locked Homes" at: http://www.youtube.com/watch?v=_VjUehiO5eM

1930 - Flip the Frog is a detective with a deerstalker in "The Cuckoo Murder Case".



Flip the Frog

³ "The Film Daily" (Volume 43--46) Jan - Dec 1928 Page 7 - May 13, 1928

“The Cuckoo Bird residing in an old clock in a creepy old mansion is shot dead by an unknown assailant; Flip the Frog is called in to investigate (and finds more than he bargained for).”⁴

Watch the full cartoon “The Cuckoo Murder Case” at:
https://www.youtube.com/watch?v=ak1ps_6fgqo

1931 Bimbo the dog and Koko the Clown are featured in “The Herring Murder Case” with Betty Boop.



Bimbo

“Gus Gorilla murders Rudy the Herring with a packed pistol on a dark, cold night. As Gus leaves the scene, horrified onlookers and Koko the Clown pop out of the inkwell to get Bimbo the detective to solve the crime. Bimbo sets out to capture the criminal in a bizarre fashion.”⁵

See Bimbo the dog and Koko the Clown in “The Herring Murder Case” at:
<https://www.youtube.com/watch?v=mIxtvOSAX6Mv>

1937 - Mickey Mouse and **Goofy** both appear in deerstalkers in the Disney animated cartoon, released through RKO Pictures, “Lonesome Ghosts”.

⁴ <http://www.imdb.com/title/tt0020798/>

⁵ http://www.bcdb.com/cartoon_story/1577-Herring_Murder_Case.html



Mickey Mouse and Goofy

Disney cartoon about Ghosts with Goofy as a Sherlock Holmes figure.

See “Lonesome Ghosts” at: https://www.youtube.com/watch?v=CIBE_36l2Ow&feature=youtu.be

1953 - Professor Lightskull and Dr. Twiddle, was a series of 13 5-minute sketches with chimpanzees dressed in Holmes and Watson outfits. Paul Frees voiced Professor Lightskull and Daws Butler voiced Doc Twiddle.



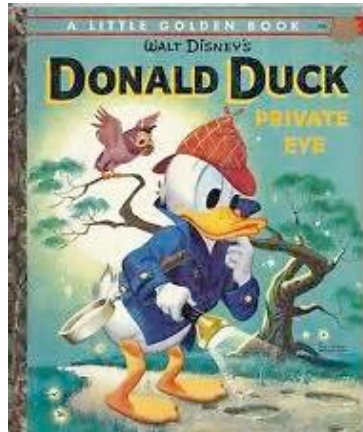
Professor Lightskull and Dr. Twiddle

(Not the real one, but they looked like this only in b/w)

"Professor Lightskull and Doc Twiddle were monkeys dressed up as Sherlock Holmes and Doctor Watson. Their episodes appeared on Chuck McCann's TV show "Let's Have Fun" (WPIX, channel 11 in New York). Each episode, lasting approx. 5 minutes was a Sherlock Holmes-type adventure. I had been looking for

Twiddle and Lightskull video footage for years, and finally, there is one episode which can be viewed on DVD. The DVD set is called the “Sherlock Holmes Archive Collection” Volume II, and it can be purchased from Amazon.com. Please note that the DVD set contains only the sketch “A Case of Hypnosis” from Professor Lightskull and Doc Twiddle.”

1945 - Donald Duck, appeared with the magnifying glass and deerstalker in Walt Disney Comics, and later Little Golden Books, “Donald Duck Private Eye”.



Donald Duck

1956 - Daffy Duck and Porky Pig - “Deduce, You Say”. Daffy Duck is "Dorlock Homes", and Porky Pig is "Dr. Watkins". The intrepid duo are sleuthing in Victorian London in hopes of finding and apprehending the Shropshire Slasher. Voices by the legendary Mel Blanc, and directed by Chuck Jones.



Daffy Duck and Porky Pig

See a cut from “Deduce, You Say” at: <https://www.youtube.com/watch?v=nEHk6LIL2VQ>

1961 - Hemlock Holmes, “a bulldog with a Cary Grant-like accent, was a recurring character in 45 of the 130 5-minute episodes of 'The Dick Tracy Show'.”⁶ Hemlock Holmes, a Cockney police bulldog named in honor of Sherlock Holmes was voiced by Jerry Hausner.



Hemlock Holmes

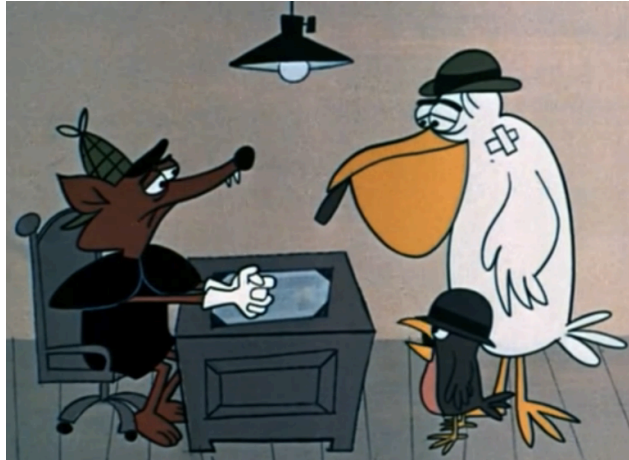
1962 - Sherlock Fox - A fox in a deerstalker appears in “The Rocky & Bullwinkle Show”, episode 21, Aesop and Son’s "The Robin the Pelican and the Angleworm" (02/08/1962).



Aesop and Son

A fox is wise enough to enlist a pelican and a robin to catch an angleworm who kidnapped the King. He deduces you have to be up pretty early in the morning to catch a worm.

⁶ Bergem, Peter, ‘Checklist of Sherlock Holmes Films and Television Programs’



Sherlock Fox, The Pelican, and The Robin

You can view episode #21 of “The Rocky & Bullwinkle Show” at:

http://www.dailymotion.com/video/xeqeo4_rocky-and-bullwinkle-and-friends-ep_lifestyle

1950s - 1960s - Prickle is a yellow clay dragon or dinosaur, from “The Gumby Show” on TV. (often thought of as a dinosaur, but in the episode The Search he is told by Gumby "Since you are relatives you go and distract the dragon.."). Prickle can actually breathe fire like a dragon. He often declares himself as a detective sporting a pipe and a hat in the likeness of Sherlock Holmes.



Prickle

The stop motion clay animation Gumby TV series also featured an episode, “Scrooge Loose”, in which Gumby, a humanoid, donned a deerstalker, with his pony sidekick Pokey in the Dr. Watson role.



Gumby and Pokey

1970 - Sherlock Fox plays Holmes in “Doctor Dolittle”, episode 12, “A Fox Called Sherlock”.



Sherlock Fox

Dr. Dolittle and his companions try to find Jip, the dog, who has been captured by the Scurvy pirate Gang. An incompetent detective, Sherlock Fox, assists in discovering where Jip is.

See “A Fox Called Sherlock” at:

<https://www.youtube.com/watch?v=5Aa9tUQHwIQ>

The Muppets are a group of puppet characters created in 1955 by the genius of puppeteer Jim Henson. Since 1950's they have appeared in films, television, music recordings, print materials, and other medias all associated with "The Muppet Show" characters. Of the many Muppet characters over the years there have been a number of Sherlock Holmes characters (16 that I'm aware of), which for the purposes of this essay we will limit the discussion to the animal Sherlock Holmes Muppets.

1976 - Rowlf the Dog portrayed Holmes, with **Baskerville the Hound** as Watson in "Sherlock Holmes and the "Case of the Disappearing Clues", the United Kingdom spot, from episode 103 of "The Muppet Show".



Rowlf and Baskerville

Rowlf and Baskerville "have been summoned by a maid to investigate the murder of Lord Bottomley. Holmes assumes that the hideous form lying motionless at the table is the body, but it is merely Fielding the Butler, Holmes quickly deduces that Fielding has committed the crime, and finds various incriminating pieces of evidence, including a drinking glass, a photograph of the butler murdering Bottomley, the fatal gun registered in Fielding's name and even the maid, who was an eyewitness. Unfortunately, all of the evidence seems to disappear whenever Holmes turns away, directly into Fielding's mouth. When the four pieces of evidence (including the maid) have been eaten, Holmes decides that Fielding cannot be guilty, as there is no case against him. Since Holmes himself did not commit the murder, he pins the blame on Watson. Fielding devours him

on the spot, leaving Holmes to come to the obvious conclusion that no murder has taken place.”⁷

Watch “Case of the Disappearing Clues” at: <https://www.youtube.com/watch?v=LU27gd34R-I>

1979 - Kermit the Frog, was Jim Henson’s first Muppet character, and he had a few appearances dressed as Holmes. Kermit dressed as Holmes in a promotional photo included in Panini Trading Stickers amongst other merchandising.⁸



Kermit

1987 - Kermit appears as "Kermlock Holmes" in issue #13 of Muppet Babies Comic with Fozzie as "Dr. Fozzie".⁹



Kermlock Holmes

⁷ http://muppet.wikia.com/wiki/Sherlock_Holmes_and_the_Case_of_the_Disappearing_Clues

⁸ http://muppet.wikia.com/wiki/Sherlock_Holmes

⁹ http://muppet.wikia.com/wiki/Muppet_Babies_Comics

1984 - Baby Gonzo, an odd looking, unclassifiable creature with blue fur, bug eyes, and a long crooked nose parodies Holmes as Inspector Gonzo, CIA (Chicken Investigation Agency) the “Muppet Babies”, episode "The Case of the Missing Chicken"¹⁰



Baby Gonzo

1992 - Surelick Bones appeared on the animated “Dog City”. Jim Henson's “Dog City” was a spin-off of the “Jim Henson Hour” special “Dog City”. The show included a combination of puppetry and cel animation.¹¹



Surelick Bones

¹⁰ http://muppet.wikia.com/wiki/Sherlock_Holmes

¹¹ [http://muppet.wikia.com/wiki/Dog_City_\(series\)](http://muppet.wikia.com/wiki/Dog_City_(series))

1997 - Sherlock Whale portrayed the Sherlock Holmes on “Muppets Tonight”, in the sketch “Sherlock Holmes and the Case of the Red Herring”, in episode 206, alongside a Muppet version of Dr Watson.¹²



Sherlock Whale

2000 - Tutter (born **Tutter T. Tutter**) a blue mouse, and **Ojo**, a bear cub, don Sherlock Holmes caps and magnifying glasses in the storybook “Mystery at The Big Blue House”. When Tutter and Ojo lose items, they put on deerstalkers and decide to team up as detectives to try and solve the mystery.¹³



Ojo and Tutter

¹² [http://muppet.wikia.com/wiki/Sherlock_Holmes_\(whale\)](http://muppet.wikia.com/wiki/Sherlock_Holmes_(whale))

¹³ http://muppet.wikia.com/wiki/Mystery_at_the_Big_Blue_House

2010 - Gonzo, an odd looking, unclassifiable creature with blue fur, bug eyes, and a long crooked nose, appears as Sherlock Holmes in “Muppet Sherlock Holmes” a four-part comic book mini-series released in 2010. The comic is a spoof of Sir Arthur Conan Doyle's Sherlock Holmes stories, with each issue to date titled after and directly (if often loosely) reworking a specific canonic story. The series stars Gonzo as Sherlock Holmes, with Fozzie Bear as Dr. Watson, Kermit the Frog as Inspector Lestrade, and Miss Piggy in various female leads (including Irene Adler).¹⁴



Gonzo and Fozzie Bear

“...the Muppets (as with the other Muppet Classic arcs) have briefly done Sherlock before. Rowlf was in a Sherlock-esque sketch in *The Muppet Show*, *Muppet Babies* versions of Bunsen and Beaker played them, while Kermit and Fozzie were seen in the Muppet Babies comic version. And that’s not even counting the recurring satire of the character from Sesame Street. This time, Gonzo is in the role of the famous detective, and an ever-flustered Fozzie pulls duty as Dr. John Watson. This would be the second time Kermit would not play the title role, the other being “Muppet Snow White” (and I don’t think we’d feel

¹⁴ http://muppet.wikia.com/wiki/Muppet_Sherlock_Holmes

right seeing Kermit in drag to get that role). Instead, he is cast as Inspector LeStrade, who doesn't seem to tolerate Sherlock's eccentricity. Casting Gonzo in the lead is a much more fitting role, as we're dealing with Holmes's real personality of being unconventional and shockingly untidy for such an organized mind."¹⁵

That finishes the Muppets section.

1974 - Snoopy appears dressed in Sherlockian garb in CBS TV's "It's a Mystery Charlie Brown".



Snoopy

"When Woodstock's fancy new nest disappears one afternoon, he turns to Snoopy for help. Adopting the guise of Sherlock Holmes (complete with cloak, deerstalker cap and bubble pipe), Snoopy and Woodstock go on the hunt for the missing nest."¹⁶

¹⁵ http://themuppetmindset.blogspot.com/2010/09/muppet-comic-mondays-muppet-sherlock_20.html

¹⁶ http://en.wikipedia.org/wiki/It's_a_Mystery,_Charlie_Brown

1976 - Pink Panther dons a deerstalker in the cartoon "Sherlock Pink".



Pink Panther

“The Pink Panther sets camp for the night leaving a serving dish containing a cake for breakfast. During the night, he sleepwalks and eats the cake in his sleep. The next morning he finds the cake missing and thinks a thief pinched it, so he gets out a Sherlock Holmes-styled hat and a magnifying glass and tries to track down the thief, scaring a tree on his way.”¹⁷

See The Pink Panther in "Sherlock Pink" at:

<https://www.youtube.com/watch?v=cyPdQuSGcbs>

1977 - Mylock Bloodstalker and Doile made their first appearance in Volume #1 issue #52 of the DC Comics “Kamandi, "Sing a Song of Survival" (September, 1977), written by Jack C. Harris, pencils by Dick Ayers, and inks by Alfredo Alcalá.¹⁸

Mylock's appearance and personality was modeled after the fictional character, Sherlock Holmes, a fictitious literary detective created by Arthur Conan Doyle, Mylock's first name is an amalgamation of Sherlock and Mycroft Holmes' older brother.

¹⁷ http://en.wikipedia.org/wiki/Sherlock_Pink

¹⁸ http://dc.wikia.com/wiki/Kamandi_Vol_1_52



Mylock Bloodstalker

Doile worked as a private detective and assistant to Mylock Bloodstalker. The serpentine businessman, Sacker, hired Mylock and Doile to hunt down and assassinate the renegade human, Kamandi.



Doile

At's right, bloke! Doile's the moniker, an' don't you forget it!

1983- Scrappy-Doo, a great dane pup, does his Sherlocking in “The Hound of the Scoobyvilles”, Animation, Don Messick as voice of Scooby & Scrappy-Doo and Casey Kasem as Shaggy Rogers. Hanna Barbera Studios. “Hound of the Scoobyvilles” is the first half of the third episode of “The New Scooby and Scrappy-Doo Show”. A ghostly dog is stealing all the sheep in Scotland, and Scooby is accused. The kids are headed to Barkerville Hall in Scotland to figure out what is happening to the Barkerville sheep. Has the curse come true, has the Hound of the Barkervilles come, and is it Scooby, as all the town people believe?¹⁹

¹⁹ http://scoobydoo.wikia.com/wiki/Hound_of_the_Scoobyvilles



Scooby and Scrappy-Doo

1983 - **Simon** played Sherlock Holmes, for the first time, and **Theodore** played Dr. Watson in an episode of the "Alvin and the Chipmunks" called "The Cruise".



Simon & Theodore

The photo above is from "Elementary, My Dear Simon", which originally aired September 17, 1988. Here, Simon introduces this special mystery episode and then stars in it as monocled ace detective Sherlock Holmes. Assisted by Dr. Watson, Theodore and Scotland Yard's Inspector Seville, Holmes tries to make sense out of a series of sophisticated break-ins resulting in only trivial thefts. The show quickly reveals the culprit to be one sinister, mustachioed Moriarty, played by Alvin.²⁰

²⁰ <http://www.dvdizzy.com/alvinandthechipmunks-movies3.html>

1984 - Scooby Doo displayed his Sherlockian skills in “Sherlock Doo” , the eleventh episode of “The New Scooby Doo Mysteries”



Scooby Doo

“When Mystery Solvers Magazine holds its first annual Mystery Solvers Contest in London, Freddie, Daphne, Shaggy, and the dogs, attend. Along with other detectives, they must solve The Mystery of the Blue Carbuncle, Sherlock Holmes last unsolved case. But they are not alone: soon the ghost of Sherlock Holmes is following the gang around, and it seems he is trying to help them, but is he? When Sherlock steals security system blueprints, and the gang is the ones believed to have done it, they must clear their names before it's too late.”²¹

1984 - Sherlock Hound was a Japanese anime series created by the legendary Hayao Miyazaki. He made a comedy series with anthropomorphic characters for dogs. Hayao Miyazaki created the first six episodes of the series before leaving for his own company, but all 26 episodes unquestionably show his influences, i.e. the wild chases, including many flying machines. Sherlock Hound was voiced by: Taichirō Hirokawa (Japanese), Larry Moss (English). Just like his original incarnation, he has a genius intellect and is extremely knowledgeable in multiple fields. He keeps a cool and logical head despite the situation. Unlike his original incarnation, his only drug habit is smoking a tobacco pipe. He keeps his apartment a mess and is regularly conducting chemical experiments that lead to clouds of noxious fumes. He also seems to have feelings for Mrs. Hudson, as does the rest of the male cast. Hound resembles either a Pembroke Corgi or a red fox.²²

²¹ http://scoobydoo.wikia.com/wiki/Sherlock_Doo

²² http://en.wikipedia.org/wiki/Sherlock_Hound



One of Sherlock Hound's Wild Chase Scenes

Doctor Watson was voiced by: Kōsei Tomita (Japanese), Lewis Arquette (English)

Hound's loyal companion, he is a trained doctor who returned to England shortly before meeting Hound. He tries his best to help Hound as he can, but has difficulty at times keeping up with Hound, both mentally and physically, being a bit overweight. Watson is a Scottish terrier.²³ Loosely based on the "Sherlock Holmes" series by Sir Arthur Conan Doyle, Sherlock Hound turns all the classic characters into dogs. The canine Sherlock Holmes, his assistant Watson, and housemaid Mrs. Hudson work together to solve mysteries. The culprit is usually Professor Moriarty and his gang, who use all kinds of wacky contraptions to steal what they want.²⁴



Sherlock Hound

Listen to the “Sherlock Hound theme song and watch clips at:https://www.youtube.com/watch?v=AvGSoz_Mfwo

²³ http://en.wikipedia.org/wiki/Sherlock_Hound

²⁴ <http://kissanime.com/Anime/Meitantei-Holmes>

1985 - Sherlock Bones and Watson appear in the animated film “Dot and the Koala”, the fantasy adventures of a little redheaded girl and her animal friends in Australia. Sherlock Bones is a rat while Watson is a cat.



Sherlock Bones and Watson

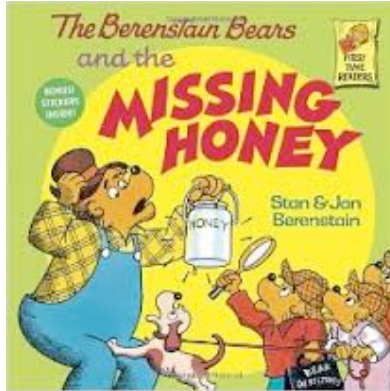
View “Dot and the Koala” at: <https://www.youtube.com/watch?v=sQd5ljuj43o>

1986 - Henry’s Cat and Chris Rabbit appear dressed as Holmes and Watson in “The Case of the Pilfered Pearls”, and in “The Case of the Missing Santa” (1992), episodes of “Henry’s Cat” seen on TV in the U.K.



Henry’s Cat and Chris Rabbit

1986 - Brother Bear and Sister Bear and a friend wear deerstalkers while they search for Papa Bear's missing favorite blackberry honey, in "The Berenstain Bears and the Missing Honey."



Brother Bear and Sister Bear

Miss Cathy - 'The Story Lady' reads "The Berenstain Bears and the Missing Honey" to you at: <https://www.youtube.com/watch?v=buLwskSVb1Q>

1986 - Sherlock Bones and Whopper are Holmes and Watson in "The Pound Puppies" episode 'In Pups We Trust'.



Whopper and Sherlock Bones

View "The Pound Puppies" episode 'In Pups We Trust' at:
<https://www.youtube.com/watch?v=oPurO7R8uMI>

1986 - Basil of Baker Street, the rodent Sherlock Holmes, and **Dr. David Q. Dawson** investigate the kidnapping of a toy-maker and uncovers its link to his arch-enemy, Professor Ratigan, in the Walt Disney Feature Animation, “The Great Mouse Detective.”



Basil and Dr. Dawson

“In Victorian London, England, a little mouse girl's toymaker father is abducted by a peg-legged bat. She enlists the aid of Basil of Baker Street, the rodent world's answer to Sherlock Holmes. The case expands as Basil uncovers the crime's link to a plot against the Crown itself.”²⁵ “Basil Of Baker Street” takes the cake for wackiest plot involving a peg-legged bat!

See the introduction to Basil scene here: <https://www.youtube.com/watch?v=2py1GaberT4>

1987 - Shedlock Jones was yet another bloodhound Holmes and voiced by Clive Revill, in the ‘Dr. Jekyll & Mr. McDuck’ episode of Disney’s “Duck Tales”. Uncle Scrooge uses a strange perfume he bought in an auction, which makes him go crazy. His nephews, Huey, Dewey, and Louie, must find an antidote with the help of a famous British detective.

²⁵ Chisholm, Kenneth <http://www.imdb.com/title/tt0091149/>



Shedlock Jones

1988 - Hawkeye Sholmes and Dr. Potsam, as Holmes and Watson in the “All in the Fog” episode of Thames TV’s “Count Duckula”.



Hawkeye Sholmes

“Inspired to be a detective, Duckula travels to England to solve a mystery, filled with old criminals, a homage to Sherlock Holmes and Goosewing's Fog Machine.”

²⁶ “Von Goosewing, in his ever-going attempt to discredit Duckula as a monster, frames him for the murder of his "great aunt, Gretchen Von Edelweiss", and sets two detectives named Hawkeye Sholmes and Dr. Potson, to prove it; Von Goosewing plants false evidence about the castle and makes it appear as though Duckula had actually murdered someone. As all this goes on, Nanny invites the housekeeper by the name of Mrs. Bludgeon, who came along with Sholmes and Potson for tea and unwittingly moves along acting as though nothing had happened.”²⁷

1989 - Tigger, voiced by Paul Winchell, has the deerstalker, cape and lens in “Tigger, Private Ear”, “Eeyore's Tail Tale”, and “Sham Pooh” episodes of “The New Adventures of Winnie the Pooh”.



Tigger

“When Tigger finds Owl's missing reading glasses (on top of his head), he decides to become a "private ear". He makes up a missing honey mystery to earn his reputation. But it goes too far, and Piglet is accused of taking honey! Can Tigger clear Piglet's name?”²⁸

See “Tigger, Private Ear” at:

https://www.youtube.com/watch?v=_cbzWG-UmOo

1989 - Zephir the Monkey, in an episode of 'Babar', “The Missing Crown Affair”, graduated from the Sherlock Holmes School of Super Sleuthing and acts to find the crown. (Canada)

²⁶ http://en.wikipedia.org/wiki/List_of_Count_Duckula_episodes

²⁷ <http://www.tv.com/shows/count-duckula/the-great-ductective-161303/>

²⁸ http://pooh.wikia.com/wiki/Tigger,_Private_Ear



Zephir the Monkey

When Babar's crown goes missing, amateur sleuth Zephir decides to help Babar solve the mystery. However they both get panicky when all the clues point out that Babar's closest friends stole the crown as the first step to taking over his kingdom.

See “The Missing Crown Affair” at: <http://www.hulu.com/watch/654712>

1989 - Chip as Sureluck Jones in “Pound of the Baskervilles”, an episode of “Chip N Dale rescue Rangers”, Tress MacNeille as voice of Chip, ‘Sureluck Jones’. Walt Disney Television Animation.



Chip as Sureluck Jones

In 1989 there was an episode of 'Chip 'n Dale Rescue Rangers' entitled “Pound of the Baskervilles” in which Chip dressed up as the famed literary detective “Sureluck Jones” tries to find a hidden will in an old mansion before time runs out whilst aided by a hound.

See “Pound of the Baskervilles” at: https://www.youtube.com/watch?v=VLoI_loYxDg

1989 - Denver the Dinosaur (a corythosaurus) wears a Sherlockian outfit in “Enter the Dino”, a U.S.-French cartoon for children.



Denver the Dinosaur

See “Enter the Dino” at: http://www.dailymotion.com/video/xxxpwb_enter-the-dino_shortfilms

1989 - Huey, Dewey, and Louie all appear in Sherlockian garb in “A Case of Mistaken Identity” an episode of “Duck Tales”.



Huey, Dewey, and Louie

See Huey, Dewey, and Louie, in “A Case of Mistaken Identity” at: <https://www.youtube.com/watch?v=IBFp14t5Q30>

1990 - Roland the Rat appears as Sherlock Holmes with **Kevin the Gerbil** in the series “Tales of the Rodent Sherlock Holmes”, an episode titled “Wilson the Notorious Canary Trainer”.



Roland the Rat and Kevin the Gerbil

See “Wilson the Notorious Canary Trainer” at: <https://www.youtube.com/watch?v=5wPwkWwApmA>

1990 - Garfield in “The Hound of the Arbuckles”, an episode of “Garfield and Friends” TV show, Lorenzo Music as the voice of Garfield the cat, Dr. Watson. Lee Mendelson Productions.



Garfield

"Garfield is anxious to see 'The Hound of the Baskervilles', but the TV is broken. Jon can't find Odie anywhere and tells Garfield to read Sherlock Holmes so his imagination can create the pictures. Garfield dozes off and finds himself playing Watson in a dream sequence entitled 'The Hound of the Arbuckles'."²⁹



Garfield

1991 - Buster Bunny assisted by Babs Bunny, does a version of Sherlock Holmes and Dr. Moriarty in "And All That Rot", a segment of 'Tiny Toon Adventures', episode 'Brave Tales of Real Rabbits'.



Buster Bunny

²⁹ http://www.ovguide.com/tv_episode/garfield-friends-season-3-episode-25-the-hound-of-the-arbuckles-226293#

1992 - Bonkers D. Bobcat, as Sheerluck Bonkers, an anthropomorphic bobcat, with his sidekick **Jitters A. Dogg, as Dr. Jitters**, a dog, appeared on an episode of “Raw Toonage”, titled “Sheerluck Bonkers”.



Bonkers D. Bobcat and Jitters A. Dogg

Victorian era detective Sheerluck Bonkers tries to find out who's stolen a priceless pendant from Princess Fawn of Doe-mania.

1992 - Goofy, Walt Disney’s tall anthropomorphic dog, appears in a deerstalker in “Sherlock Goof” an episode of “Goof Troop”.



Goofy

“In the fourth episode of "Goof History", when Max attempted to catch a mouse to keep as a pet, Goofy told Max about his ancestor Sherlock Goof, who was an exterminator-turned-detective. He made friends with a mouse, and as a team, they tracked down and battle Professor Inferiority, the thief of the crown jewels.”³⁰

³⁰ <http://www.tv.com/shows/goof-troop/sherlock-goof-181568/>

1993 - Sherlock Droopy and Dr. Dripple, are in “Sherlock Droopy Gets Hounded”, an episode of “Droopy, Master Detective”, Don Messick as voice of Sherlock Droopy and Charles Adler as voice of Dr. Dripple, from Hanna-Barbera/Turner Entertainment.



Sherlock Droopy and Dr. Dripple

An episode based on Sherlock Holmes Novel "The Hound of the Baskervilles." Droopy and Dripple return as Sherlock Droopy and Dr. Dripple, this time they are called to protect heiress Becky Baskerveil from a family curse, which is all a sinister plot by the sinister McWolf who has his eyes set on the family fortune.

Watch the cartoon “Sherlock Droopy Gets Hounded” at: <http://www.youtube.com/watch?v=3i3yP7AFccM>

1993 - Dudley the Dragon dons the deerstalker in “Dudley Gets a Tummy Ache”. This was an episode of 'The Adventures of Dudley the Dragon', where Dudley and several of the girls wear deerstalkers.



Dudley the Dragon

“Dudley has a tummy ache, and cannot seem to figure out how he got it. He asks his friend Sally to help him understand why his stomach hurts, as the two become detectives and retrace what Dudley has done and eaten throughout the day.”³¹

1993 - Leonardo, Michaelangelo, Raphael, and Donatello, the Teenage Mutant Ninja Turtles assist Sherlock Holmes and Dr. Watson in “Elementary, My Dear Turtle”, an episode of their cartoon series.



Leonardo (blue), Michaelangelo (orange), Raphael (red), and Donatello (purple)

“The Turtles are in England, when they are taken back to the past, via an experimental atomic clock and must team up with Sherlock Holmes and Doctor Watson in order to get the clock back and return to the present.”³²

See “Elementary. My Dear Turtle” at: https://www.youtube.com/watch?v=QDcZeQ_vgeo

1994 - Marlon, Rocky, and Bluey, The Avenger Penguins, a U.K. ripoff of the Teenage Mutant Turtles, have the big dim-wit Rocky don the deerstalker in the episode “Sherlock’s Penguins”.

³¹ <http://www.kidobi.com/videos-for-kids/Dudley-Gets-A-Tummy-Ache/2a52e97a-25c6-4a45-9db5-d99a0d54f235>

³² <http://www.imdb.com/title/tt0873639/>

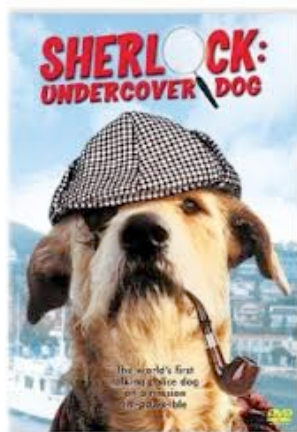


Avenger Penguin Rocky

“The Avenger Penguins travel to London to tackle Caractacus P. Doom's cousin, Professor Moriarty, who has leased a drug into the water supply which causes everyone to act like a total cad.”³³

Watch “Sherlock’s Penguins” at: <https://www.youtube.com/watch?v=G1NQv5BPELY>

1994 - Sherlock, a talking police dog, plays the Sherlock Holmes role in the movie “Sherlock Undercover Dog”.



Sherlock

³³ <https://www.youtube.com/watch?v=G1NQv5BPELY>

“Billy, 10, a dreamer, wants to be taken seriously so he can live with his toy-designer father on Catalina Island. Billy's plans get seriously spoilt when Sherlock, a talking police dog, demands his help to rescue his police detective handler kidnaped by smugglers. But Sherlock likes to keep his talking a closely-guarded secret. So now no one will take Billy seriously until he rescues the kidnaped detective and catches the smugglers...”³⁴

End of part I
Part II begins with 1995 - Wishbone

³⁴ Gardner, Richard H. http://www.imdb.com/title/tt0111168/plotsummary?ref_=tt_ov_pl